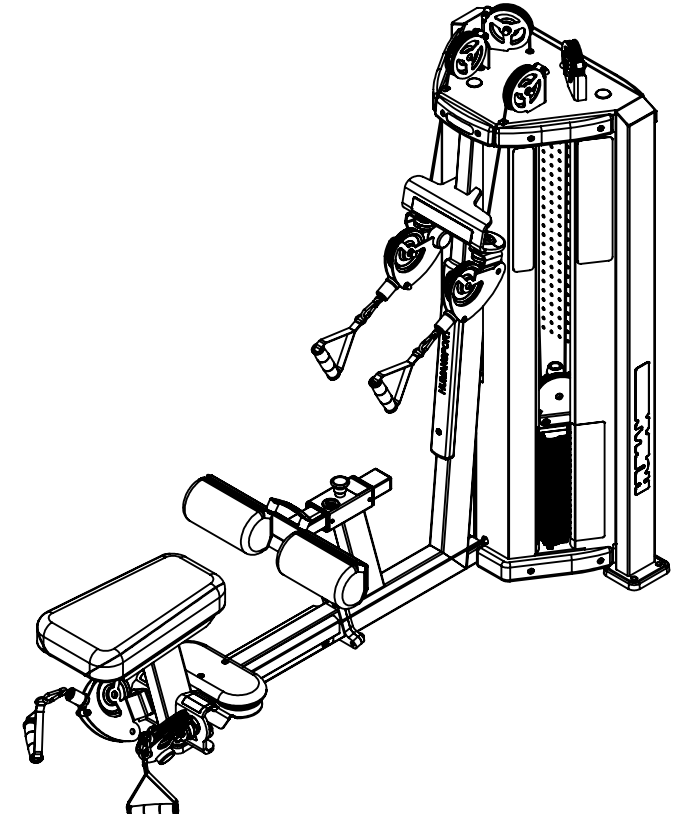
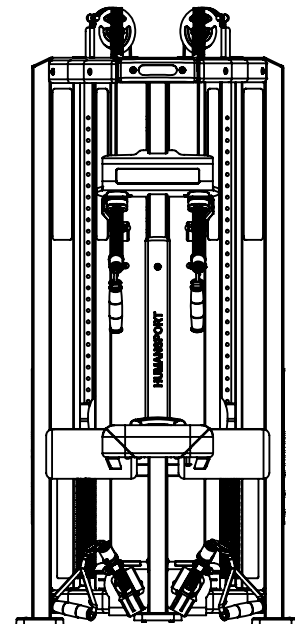
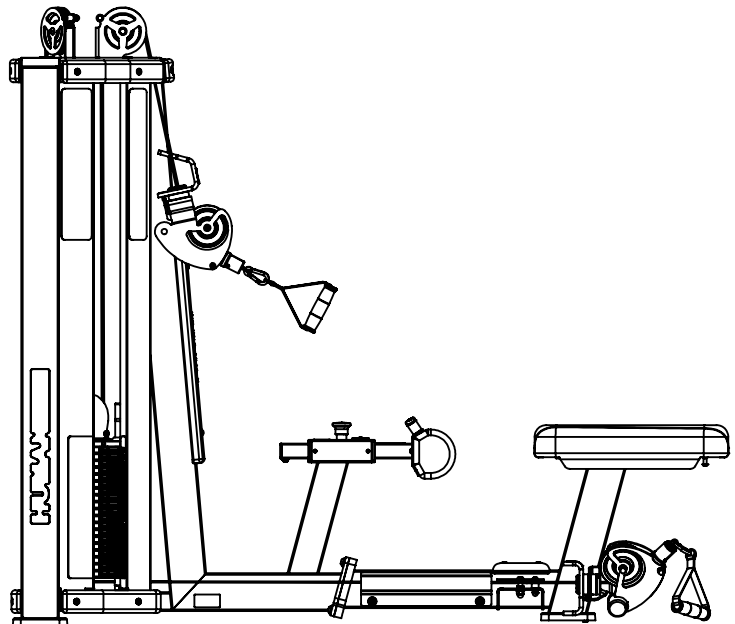
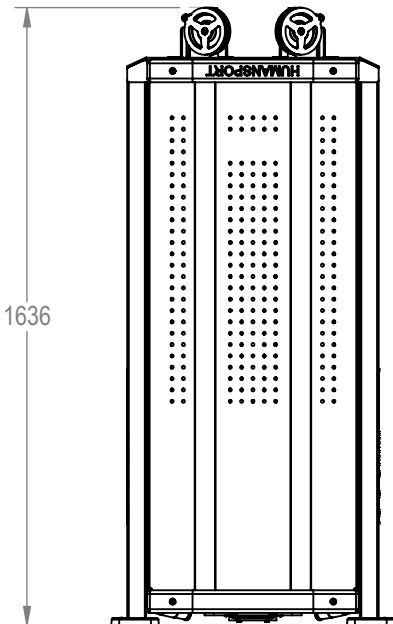
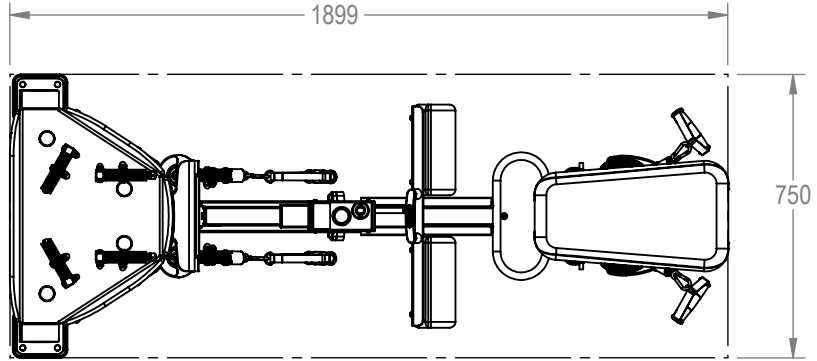


NOTES:

REVISION HISTORY				
REV	DATE	DESCRIPTION	ECO	BY
A	---	DOCUMENT RELEASE	---	---
B	8/26/2013	RECREATE BOM. CHANGE TO LOCK N LOAD; CHANGE WEIGHT STACK, SHROUDS, STICKERS	14335	CRB



**DOCUMENT STATUS:
RELEASE**

NOTICE OF PROPRIETARY INFORMATION
THIS DOCUMENT SHALL NOT BE REPRODUCED NOR SHALL THE INFORMATION CONTAINED HEREIN BE USED BY OR DISCLOSED TO OTHER EXCEPT AS EXPRESSLY AUTHORIZED BY CORE HEALTH & FITNESS, LLC.

MATERIAL
SEE BOM

FINISH
SEE BOM

VENDOR:

P/N:

THIRD ANGLE PROJECTION



	INITIAL	DATE
DRAWN	CRB	8/26/2013
CHECKED		
APPROVED		

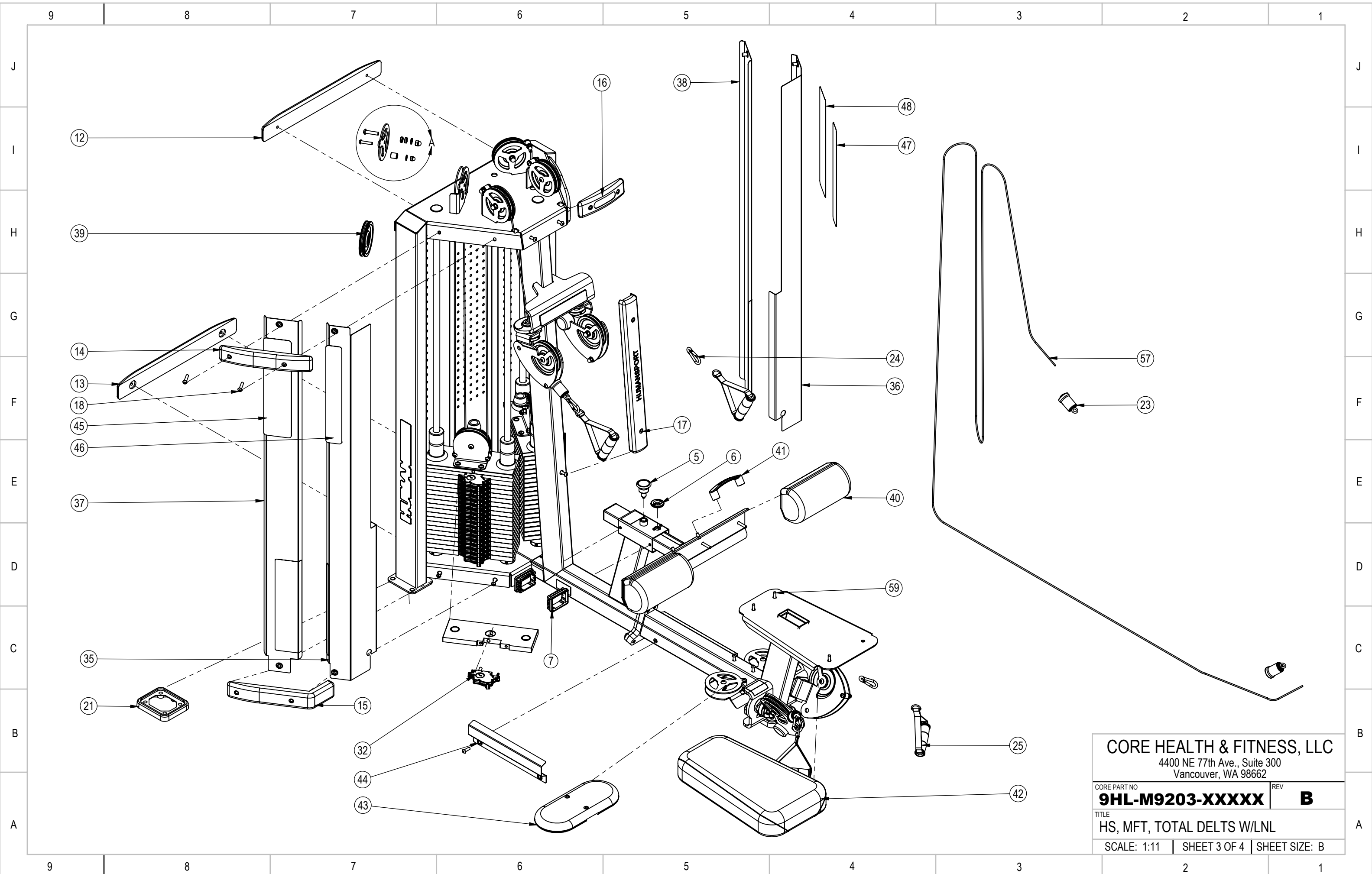
CORE HEALTH & FITNESS, LLC
4400 NE 77th Ave., Suite 300
Vancouver, WA 98662

CORE PART NO	REV
9HL-M9203-XXXXX	B
TITLE HS, MFT, TOTAL DELTS W/LNL	
SCALE: 1:20	SHEET 1 OF 4
SHEET SIZE: B	

9	8	7	6	5	4	3	2	1	
ITEM NO.	PART NUMBER	DESCRIPTION	QTY.						
J	2	730-2573	ASSY, BRACKET, PULLEY, HS, RH	2					
	3	730-2574	ASSY, BRACKET, PULLEY, HS, LH	2					
	4	730-2578	ASSY,KNEE PADS,TD,HS	1					
	5	730-0128	PIN, ASSY, SEAT, ADJ., HS	1					
I	6	730-0134	COLLAR, POST ADJ., VIEW HOLE. HS	1					
	7	730-0135	SLEEVE, POST SHAFT, HS	2					
	12	020-6986-X	TRIM, WOOD, TOP, BACK, HS	1					
	13	020-6987-X	TRIM, WOOD, BOTTOM, BACK, HS	1					
	14	020-6983-X	TRIM, WOOD, UPPER, HS	2					
	15	020-6982-X	TRIM, WOOD, BOTTOM, HS	2					
H	16	020-6985-X	TRIM, WOOD, TOP, CENTER, HS	1					
	17	020-6984-X	TRIM, WOOD, CENTER, HS	1					
	18	730-3030	BOLT, GENERAL, HUMAN SPORT	22					
	19	730-3043	WASHER, PULLEY BRACKET, HUMAN SPORT	8					
G	21	020-6988	PAD, RUBBER, FEET, HS	3					
	23	730-0129	BEARING, ROTATING, CLAMP	4					
	24	730-0143	CLIP, METAL, HS	4					
	25	730-0126	GRIP, HANDLE, HS	4					
	32	731-1423-KT	KIT,ASSY,SWITCH,LNL,STRAIGHT	38					
F	34	731-0101	PLATE,WEIGHT,5Kg,18mm	38					
	35	730-3036	SHROUD, INSIDE, LEFT, TOTAL DELT	1					
	36	730-3037	SHROUD, INSIDE, RIGHT, TOTAL DELT	1					
	37	730-3025	SHROUD, RIGHT, OUTSIDE	1					
E	38	730-3022	SHROUD, OUTSIDE, LEFT, HUMAN SPORT	1					
	39	730-0142	PULLEY, ASSY, HS	4					
	40	730-0136-XX	PADS, SHIN,HS	2					
	41	730-3042	HANDLE, HUMAN SPORT	1					
	42	730-0382-XX	PAD, BENCH, HS	1					
D	43	020-6995-X	PLATAFORM, WOOD,FOOT REST, HS	1					
	44	020-6991	SHROUD, CABLE GUIDE, HS	2					
	45	730-3038	STICKER, SHROUD, OUTSIDE LEFT, TOTAL DELTS	1					
	46	730-3039	STICKER, SHROUD, INSIDE LEFT, TOTAL DELTS	1					
	47	730-3041	STICKER, SHROUD, OUTSIDE RIGHT, TOTAL DELTS	1					
C	48	730-3040	STICKER, SHROUD, OUTSIDE RIGHT, TOTAL DELTS	1					
	49	730-3035	SPACER, PULLEY BEARING, HUMAN SPORT	12					
	50	730-3031	OUTER BRACKET, PULLEY, HUMAN SPORT	6					
	51	730-3032	SPACER, PULLEY BRACKET, HUMAN SPORT	6					
B	52	730-3020	PULLEY BOLT, HUMAN SPORT	6					
	53	120-3301	WASHER, M10	6					
	54	730-3034	ACORN NUT, GENERAL, HUMAN SPORT	6					
	55	730-3033	ACORN NUT, PULLEY BOLT, HUMAN SPORT	6					
A	57	130-1751	CABLE, 2.5mm 19x7 AIRCRAFT, 3.5mm OD	2					

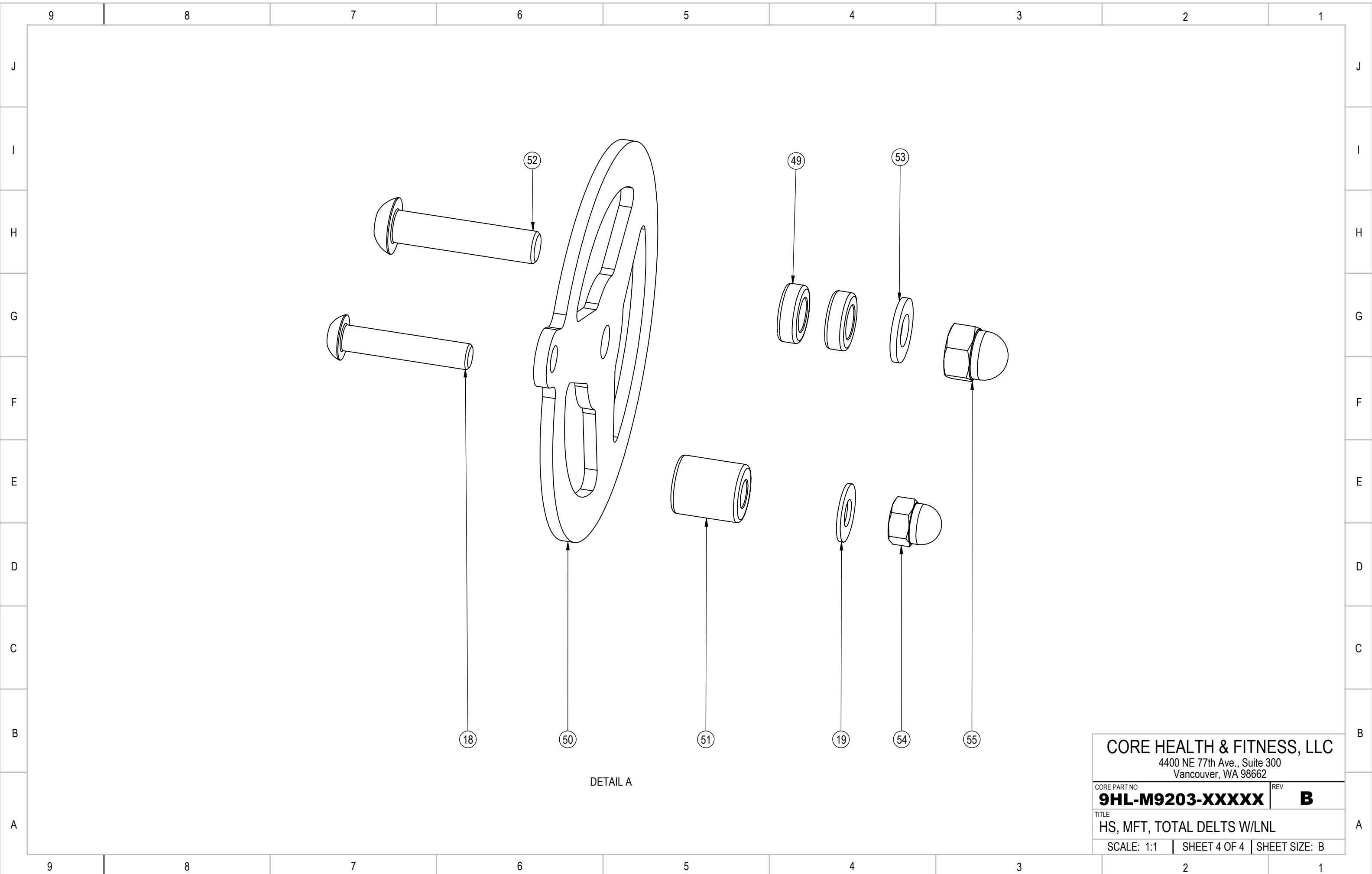
CORE HEALTH & FITNESS, LLC
4400 NE 77th Ave., Suite 300
Vancouver, WA 98662

CORE PART NO	9HL-M9203-XXXXX	REV	B
TITLE	HS, MFT, TOTAL DELTS W/LNL		
SCALE: 1:20	SHEET 2 OF 4	SHEET SIZE: B	



CORE HEALTH & FITNESS, LLC
 4400 NE 77th Ave., Suite 300
 Vancouver, WA 98662

CORE PART NO	REV
9HL-M9203-XXXXX	B
TITLE	
HS, MFT, TOTAL DELTS W/LNL	
SCALE: 1:11	SHEET 3 OF 4 SHEET SIZE: B



DETAIL A

<p>CORE HEALTH & FITNESS, LLC 4400 NE 77th Ave., Suite 300 Vancouver, WA 98662</p>		
<p>CORE PART NO 9HL-M9203-XXXXX</p>	<p>REV B</p>	
<p>TITLE HS, MFT, TOTAL DELTS W/LNL</p>		
<p>SCALE: 1:1</p>	<p>SHEET 4 OF 4</p>	<p>SHEET SIZE: B</p>